



Chiltern Primary School

School Improvement Plan 2023-2024

Our mission statement is:

We work together to provide a high-quality education for all within our safe, welcoming, respectful and inclusive environment.

Chiltern Primary School's core principles are:

- To enable life-long learning, to support building of healthy, positive relationships and the confidence in establishing broader hobbies and interests in the wider world:
- To embed a love of learning for all futures through carefully planned, sequenced opportunities across our learning journey.
- To weave in prior knowledge to all new learning by creating awe and wonder that inspires and enhances pupil outcomes.
- To create and foster a sense of belonging for all of our pupils and families no matter what their need, ability, culture or life experiences to date.
- To deliver quality first teaching from all adults by aiming high; insisting on challenge for all pupils and building sustainable cultural capital.

Chiltern Primary School Strategic Improvement Plan

Overview of Key Strategic Priorities

EYFS

Every child will become a confident, independent and reflective learner; enabling environments and opportunities ensure the development of the whole child.

Leadership and Management

Leaders at our school have a clear and ambitious vision, are effective in their roles and are enablers of success at all levels.

Quality of Education Curriculum

Teachers are experts; they effectively employ a range of strategies that support the needs of all learners, create excellent climates for learning and consistently deliver high quality teaching enabling all pupils to maximise their potential.

Inclusion / Personal Development

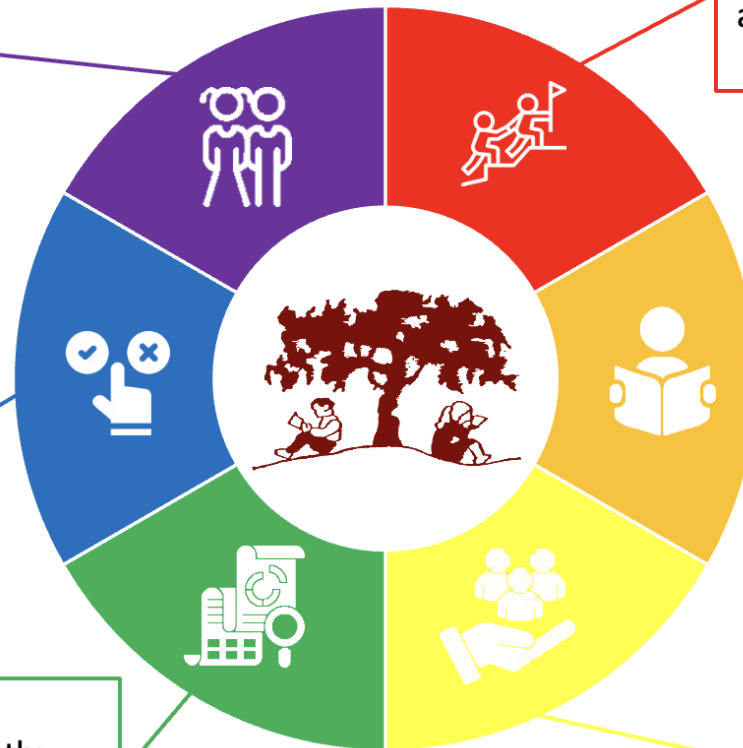
Our curriculum is bespoke for our pupils with opportunities for enrichment to achieve excellent outcomes for all pupils.

Assessment



Assessment is used confidently, consistently and with purpose to raise aspirations and drive pupil outcomes.

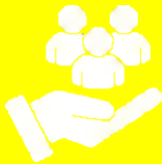

Behaviour and Attitude



Consistently high standards of behaviour and positive attitudes are essential in our school community and are underpinned by high levels of pupil and parent engagement.



Key Strategic Priorities and Objectives

<p>Key Priority 1:</p> <p>LEADERSHIP AND MANAGEMENT</p> <p>Leaders at our school have a clear and ambitious vision, are effective in their roles and are enablers of success at all levels.</p> 	<p><u>Objective 1.1</u></p> <p>To continue to develop the effectiveness, roles and responsibilities of the leadership structure and whole staff.</p>	<p><u>Objective 1.2</u></p> <p>To establish, implement and review a clear and ambitious vision.</p>	<p><u>Objective 1.3</u></p> <p>To ensure clear intent, implementation and continuously review, to deliver effective robust safeguarding processes across our school.</p>	<p><u>Objective 1.4</u></p> <p>To further develop the governor role and impact of the governing body.</p>
<p>Key Priority 2:</p> <p>QUALITY OF TEACHING AND LEARNING</p> <p>Teachers are experts; they effectively employ a range of strategies that support the needs of all learners, create excellent climates for learning and consistently deliver high quality teaching enabling all pupils to maximise their potential.</p> 	<p><u>Objective 2.1</u></p> <p>To provide opportunities for CPD for teachers and support staff in order to improve/ develop teaching and learning: improving pupil outcomes.</p>	<p><u>Objective 2.2</u></p> <p>To ensure effective deployment of adults to improve pupil outcomes.</p>	<p><u>Objective 2.3</u></p> <p>To develop stimulating and engaging environments that promotes and supports effective learning.</p>	<p><u>Objective 2.4</u></p> <p>To work towards consistently high-quality teaching in all classrooms to raise pupil attainment and outcomes in all areas of the curriculum.</p>

<p>Key Priority 3:</p> <p>CURRICULUM</p> <p>Our curriculum is bespoke for our pupils with opportunities for enrichment to achieve excellent outcomes for all pupils.</p> 	<p><u>Objective 3.1</u></p> <p>To implement and develop a curriculum that has been designed specifically for Chiltern Primary to meet the needs of the pupils, particularly developing oracy skills and ensuring coverage and progression.</p>	<p><u>Objective 3.2</u></p> <p>To develop Subject Leadership</p>	<p><u>Objective 3.3</u></p> <p>To embed experiences and aspirations within the curriculum, providing meaningful enrichment opportunities</p>	<p><u>Objective 3.4</u></p> <p>To use a research-based approach to the implementation and teaching of the curriculum</p>
<p>Key Priority 4:</p> <p>DATA AND ASSESSMENT</p> <p>Assessment is used confidently, consistently and with purpose to raise aspirations and drive pupil outcomes.</p> 	<p><u>Objective 4.1</u></p> <p>To create a thorough, consistent approach to summative assessment across the school</p>	<p><u>Objective 4.2</u></p> <p>To develop the effective use of formative assessment to support pupil outcomes</p>	<p><u>Objective 4.3</u></p> <p>To support and develop subject leader's data and assessment monitoring</p>	<p><u>Objective 4.4</u></p> <p>To support, challenge and develop teacher judgements through moderation</p>

<p>Key Priority 5:</p> <p>BEHAVIOUR AND ATTITUDE</p> <p>Consistently high standards of behaviour and positive attitudes are essential in our school community and are underpinned by high levels of pupil and parent engagement.</p> 	<p><u>Objective 5.1</u></p> <p>To ensure the new positive Behaviour Policy is shared and understood by all stakeholders.</p>	<p><u>Objective 5.2</u></p> <p>To promote pupil engagement and enjoyment of school through an extensive extracurricular provision.</p>	<p><u>Objective 5.3</u></p> <p>To implement improvements in lunchtime supervision to support pupils' behaviour.</p>	<p><u>Objective 5.4</u></p> <p>To enhance parent engagement through a range of communication platforms and offer of parent workshops.</p>
<p>Key Priority 6:</p> <p>PERSONAL DEVELOPMENT</p> <p>Every child will become a confident, independent and reflective learner; enabling environments and opportunities ensure the development of the whole child.</p> 	<p><u>Objective 6.1</u></p> <p>To ensure all children's individual needs are supported through pupil wellbeing and academic achievement.</p>	<p><u>Objective 6.2</u></p> <p>To enable pupils to confidently recognise their own wellbeing in order to keep themselves mentally and physically healthy</p>	<p><u>Objective 6.3</u></p> <p>To develop a rigorous cycle of core values and SMSC is celebrated across the school consistently.</p>	<p><u>Objective 6.4</u></p> <p>To ensure all pupils needs are met through access to an inclusive environment</p>